

CIS

Computer- Interview- System



Questionnaire system

install

Installation of the CIS Computer Interview System

- The CIS Computer Interview System must be installed before CIS interview projects (questionnaire) can be installed and run.

1. Installation of the CIS Computer Interview System

If you have received the installation file by E-Mail

Copy the file to a folder of your choice on your computer.

If you want to install the CIS Computer Interview System on mobile interview computers, copy the file to a data medium (USB stick, zip disc)

Start "CISsetup_8.5.xxx_(Build yyy).msi" by double-clicking File Explorer.

Follow the installation instructions.

If you have received the installation file on a data medium (CD-ROM, USB stick, disc)

Open the data medium using File Explorer (if it does not open automatically).

Start "CISsetup_8.5.xxx_(Build yyy).msi" by double-clicking File Explorer.

Follow the installation instructions.

Close all Windows programs (Fig. 1).

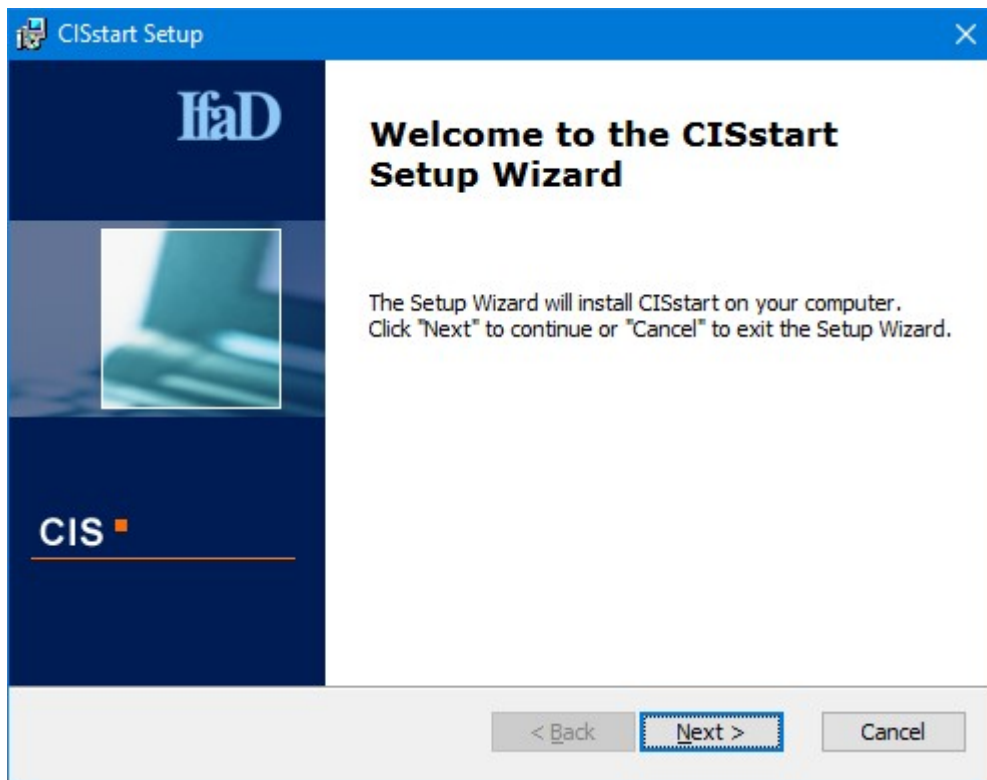


Fig. 1

Set the installations referring CIS program updates and internet connections (Fig. 2).

Select if the program updates provided by IfaD automatically shall be installed when starting CIS program the next time.

Define the proxy settings if a proxy is used for the internet connections.

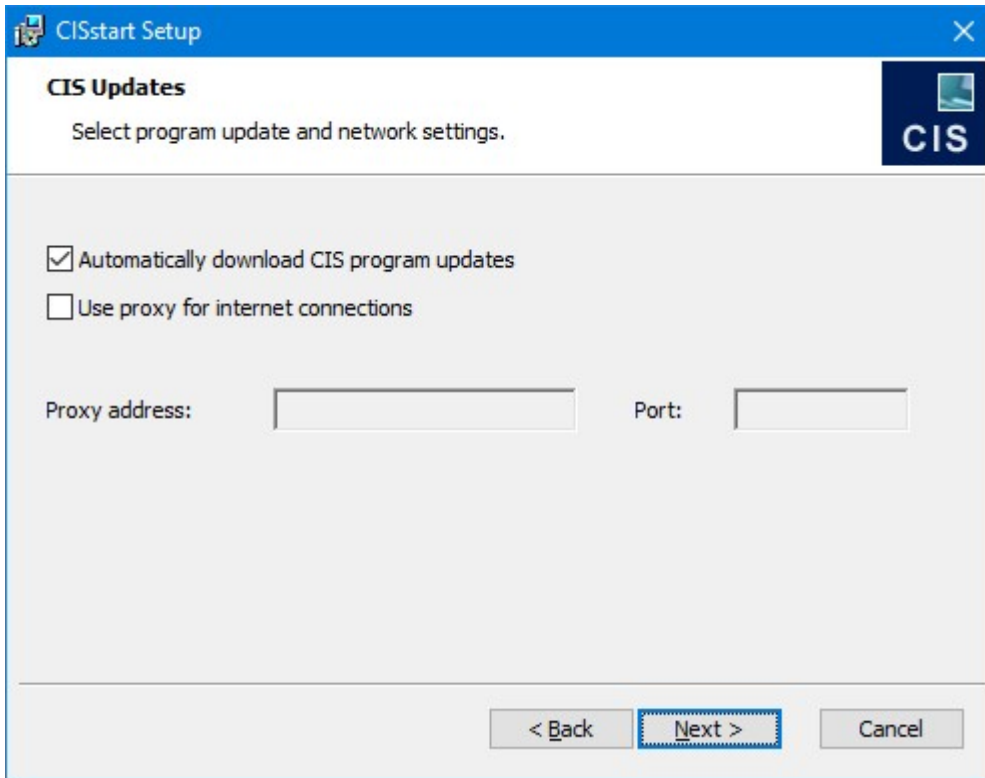


Fig. 2

Confirm pre-selection of the folder to which you want to save CIS.
If you wish to select a different folder for the installation, click “Browse...” and select a different folder (Fig. 3).

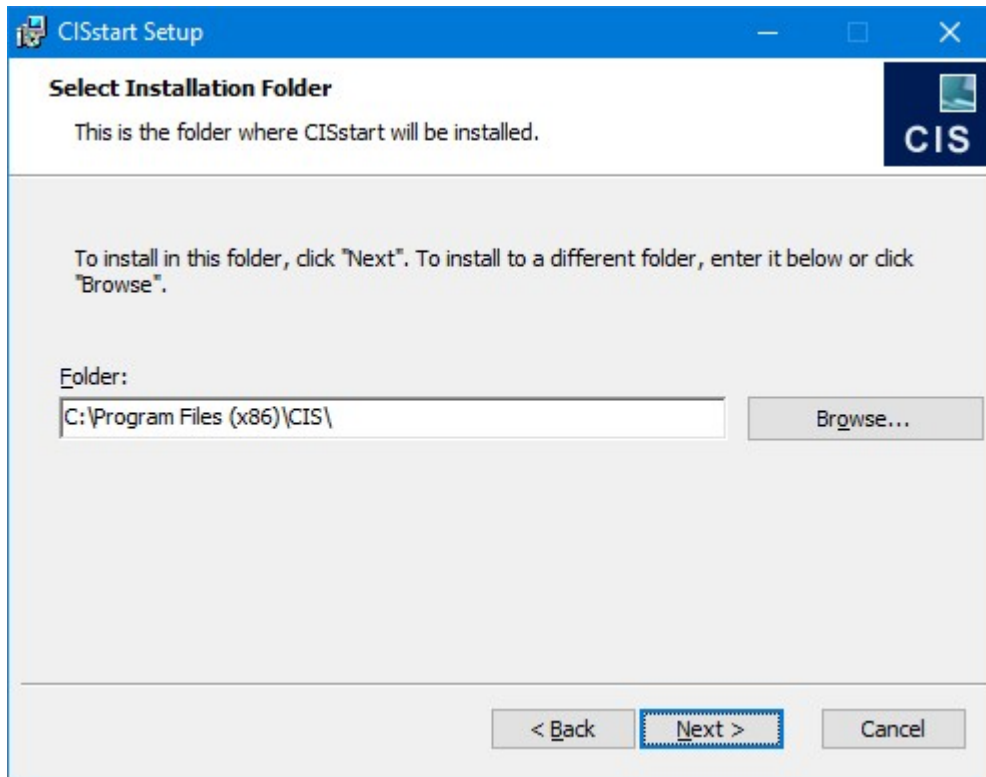


Fig. 3

Settings for the installation:

Select the user group for which CIS shall be installed (Fig. 4).

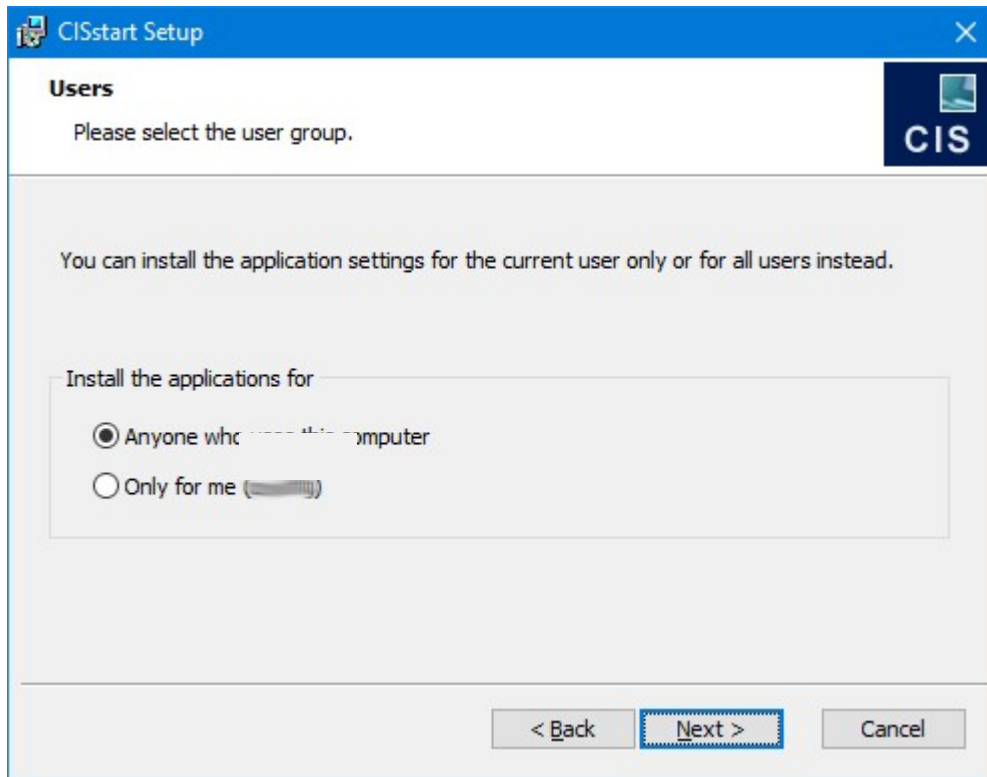


Fig. 4

Under “CIS projects path” confirm the pre-selection of the folder, where the CIS projects will be saved and under “CIS settings” confirm the pre-selection of the folder, where the CIS settings will be saved.

If you wish to select a different folder for either one, click “Browse...” and select a different folder (Fig. 5).

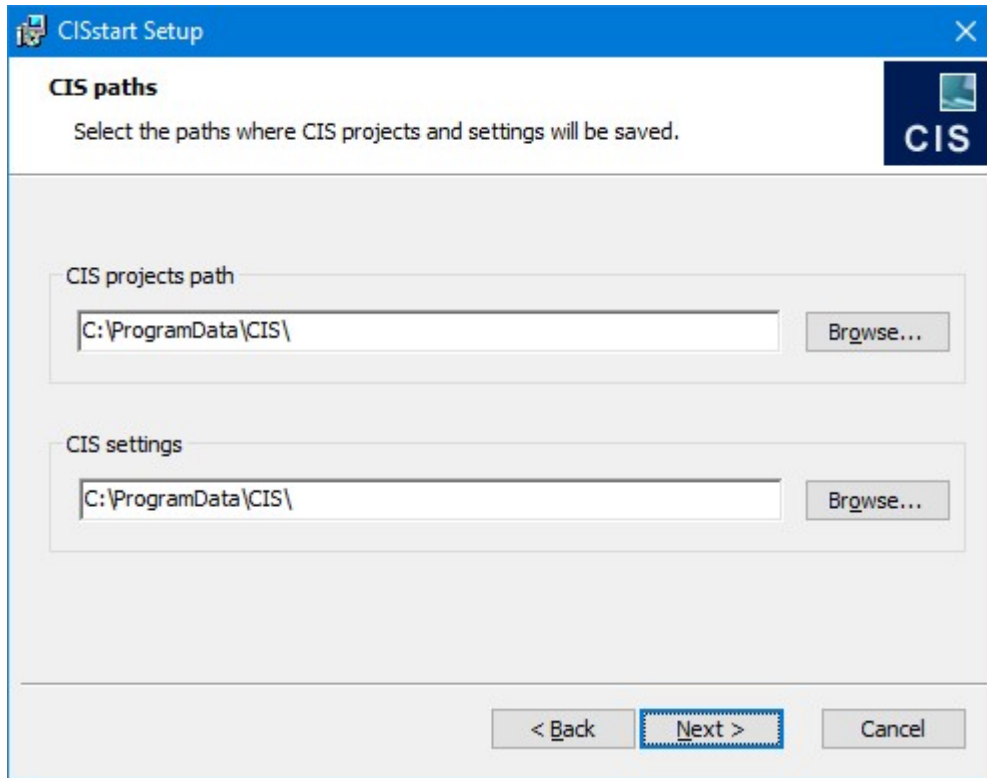


Fig. 5

The details required for the CIS installation have been given and the installation can begin (Fig. 6).

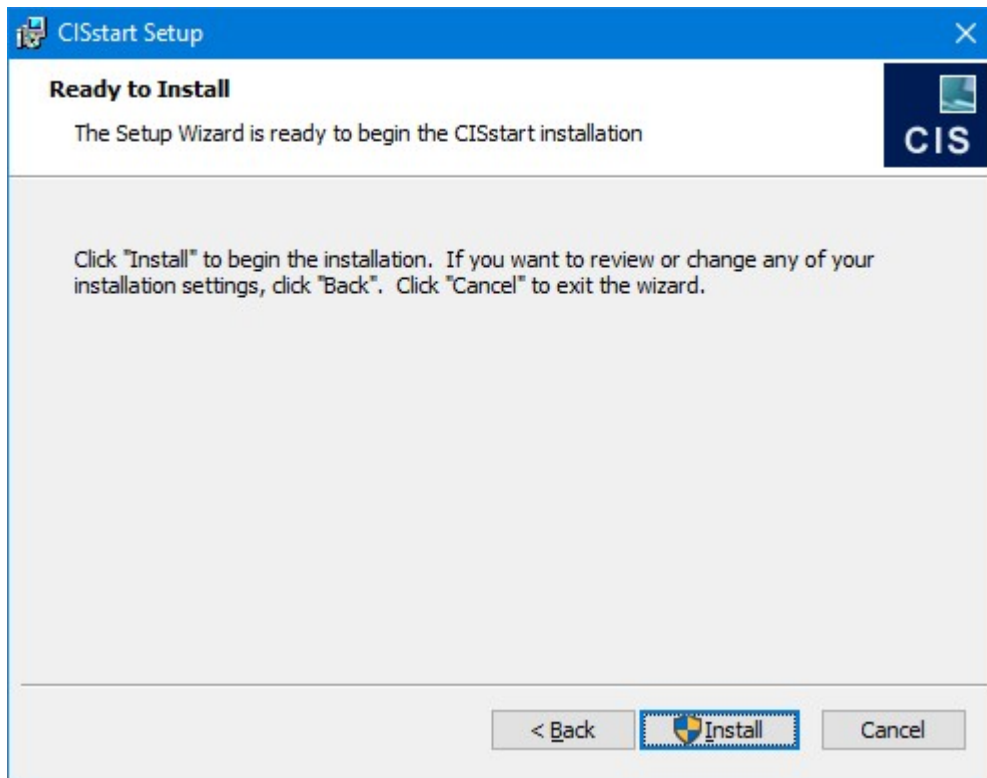


Fig. 6

Installation:

During the installation process, a dialog will display the installation status.

After installation has been successfully completed, the closedown dialog (Fig. 7) will be displayed.

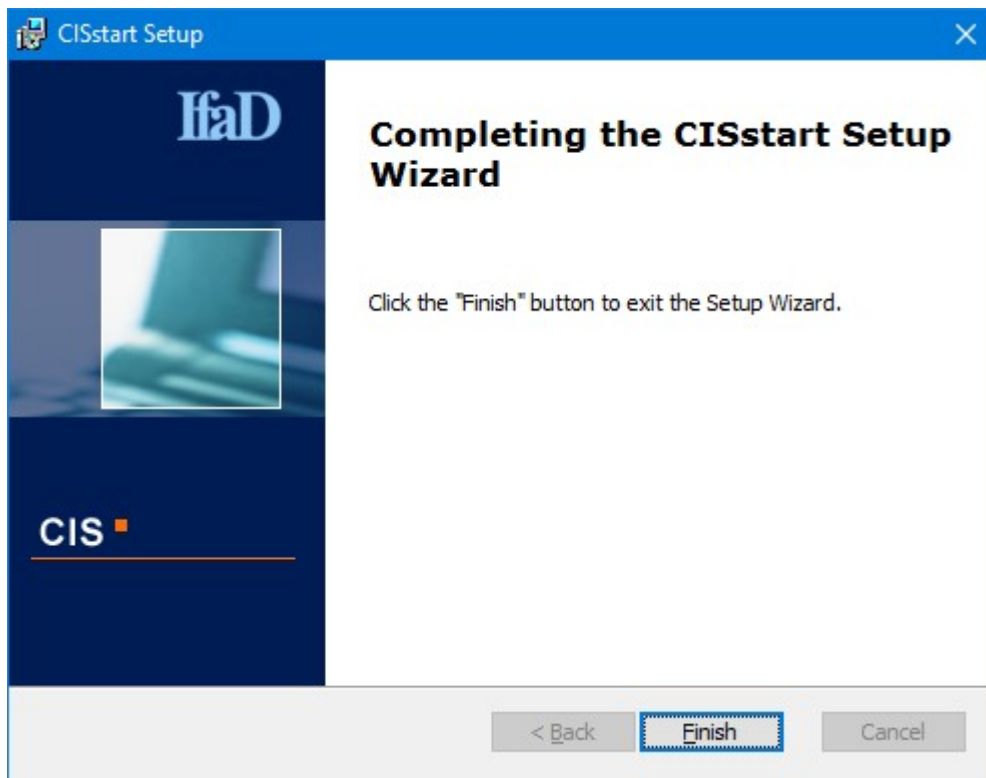


Fig. 7